



Blue Cross and Blue Shield of Louisiana incorporated as Louisiana Health Service & Indemnity Company.

ELECTRONIC DATA INTERCHANGE (EDI) CLEARINGHOUSE SERVICES

Table of Contents

I. Introduction.....	3
II. BCBSLA Clearinghouse Services Overview.....	4
Quick Start Guidelines.....	4
EDI Enrollment.....	4
Test Submitter ID Assigned and Notification Sent.....	4
Testing.....	4
Live/Production.....	4
III. General Information.....	5
Hours of Operation.....	5
Customer Support.....	5
Processing Cycle.....	5
IV. Communication Guidelines.....	6
Connection and Communication Management.....	6
Accepted Protocols.....	6
Authentication.....	7
File Formats.....	8
V. Reports Generated from Clearinghouse.....	9
Summary of Reports Generated from Clearinghouse:.....	9
Communication Reports.....	10
Functional Acknowledgment Reports.....	11
Claims Submission Validation Reports (Claims transactions only).....	12
VI. Transaction Testing.....	13
Testing Steps.....	13
VII. Appendix A Asynchronous Communications.....	14
Async File Send and Receive Commands.....	15
Dial-up login Screen.....	16
Upload/Add HIPAA Compliant X12 Transactions.....	18
Requesting HIPAA Compliant X12 Response Files.....	21
Async File Receive commands.....	21
Logging Off the Communication Server.....	25
How to specify a modem protocol.....	26
VIII. Appendix B: FTP Communications.....	27
Connect Enterprise Secure Client Configuration.....	27
FTP File Send and Receive Commands.....	28
FTP Login and Directory Request.....	29
PUT Command: to send files.....	31
GET Command: to retrieve files.....	32
Quit Command: To log off.....	34

I. Introduction

The intent of this document is to provide a comprehensive overview of the Blue Cross and Blue Shield of Louisiana (BCBSLA) Clearinghouse services. Information is provided on enrolling in Electronic Data Interchange (EDI) services, hours of operation, processing cycles, communication requirements, file formats, and reports.

For any questions relating to EDI submission to BCBSLA, contact us at:

225-291-4334
edclearinghousesupport@bcbsla.com
EDI Customer Operations
Attention: Clearinghouse Services
Blue Cross and Blue Shield of Louisiana
P.O. Box 98029
Baton Rouge, LA 70898-9029

II. BCBSLA Clearinghouse Services Overview

Quick Start Guidelines

The following is a general overview of the set-up process for Trading Partners who wish to submit electronic transactions directly to BCBSLA.

Step	Action
1.	<p>EDI Enrollment Sign and return two (2) originals of the Electronic Trading Partner Agreement (“Agreement”) and the EDI Transaction Addendum. These documents can be downloaded from the BCBSLA corporate website.</p>
2.	<p>Test Submitter ID Assigned and Notification Sent Upon receipt of the appropriate agreements, BCBSLA will assign a test submitter identification (ID) number and a secure password. A written notification will be sent to you.</p> <p>The access dial-in phone number <u>or</u> FTP address will also be distributed at this time.</p>
3.	<p>Testing</p> <ul style="list-style-type: none"> • Trading Partner submits test transactions. Batch test files should contain a minimum of 25 transactions, representative of expected transaction types that will be submitted in a production. • Trading Partners are responsible for reviewing test results, correcting identified errors and retransmitting the test file, if necessary. Please contact an EDI Representative if assistance is needed in this process. Refer to the Reports Generated section for a listing of reports Trading Partners can use to analyze test results.
4.	<p>Live/Production Once a successful test is completed, an EDI Representative will issue a Production Submitter ID Number and a secure password via written notification</p>

III. General Information

Hours of Operation

The system will be available 24 hours, 7 days a week. The system will be periodically unavailable for scheduled maintenance and updates outside of normal business hours only. Though BCBSLA strives to have the systems available 24 hours, 7 days a week, uninterrupted service is not guaranteed.

Customer Support

Customer support will be provided during our normal business hours:
Monday – Friday*, 8:00 a.m. to 4:30 p.m. Central Standard Time (CST)

*Except holidays

Telephone Support: 225-291-4334

Email Support: edclearinghousesupport@bcbsla.com

Fax: 225-298-2945

Mailing Address: EDI Customer Operations
Attention: Clearinghouse Services
Blue Cross and Blue Shield of Louisiana
P.O. Box 98029
Baton Rouge, LA 70898-9029

Processing Cycle

BCBSLA will accept an unlimited number of transmissions within an operating day; however, batch transactions will be accumulated and processed once a day.

Batch Transactions: Batch transmissions are moved at 3 p.m. (CST) for nightly processing. All batch transmissions received after this time will be processed the following business day.

Real-Time Transactions: Real-time transactions will be processed while the Trading Partner is connected.

ERA Availability: Electronic Remittance Advice files are available by 12:00 p.m. on Monday of each week.

IV. Communication Guidelines

Connection and Communication Management

BCBSLA has selected a communication management software package called Connect: Enterprise (by Sterling Commerce) that will support a suite of communications protocols, point-to-point data exchange, industry standard security and encryption, and data tracking and reporting. This section outlines the protocols accepted by BCBSLA and the authentication requirements.

Accepted Protocols

Trading Partners will have the option to send/receive files to/from the Clearinghouse using one of the following communication protocols supported by BCBSLA. Each protocol is followed by a list of common software packages that can be used to establish a connection.

Secure FTP (FTPs):

The BCBSLA Clearinghouse will only support 128-Bit SSL (Secure Sockets Layer) encrypted file transfer via the Secure FTP. FTP (File Transfer Protocol) is a client-server protocol, which allows a user on one computer to transfer files to and from another computer over a TCP/IP network. BCBSLA has elected to support the highest commercially available encryption level for FTP to protect your confidential data when sharing over the Internet. Some commercially available packages for this method are *WS_FTP Pro*, *CuteFTP Pro*, *FTP Voyager*, and *Sterling Commerce Connect:Enterprise Command Line Client*. Since BCBSLA is using Sterling Commerce software in our Clearinghouse, we will offer limited setup support to Trading Partners that use the Sterling Commerce FTP client software package. See **Appendix B** for details on FTP procedures.

Asynchronous:

The BCBSLA Clearinghouse will support standard dial-up ASYNC communications including XMODEM, YMODEM, ZMODEM and KERMIT. ***The preferred asynchronous connection is via ZMODEM.*** This method of transport is frequently used with modems and allows a user on one computer to transfer files to and from another computer. Maximum accepted modem speed is **56** kbps. Among commonly known software packages are *Procomm*, *PcAnywhere* and *Hyperterminal*. See **Appendix A** for details on Asynchronous procedures.

Note: The BCBSLA Clearinghouse Will Not Support Zipped (Compressed) Files.

Authentication

HIPAA privacy and security rules set forth in Social Security Act § 1173(d) require authentication to ensure that unauthorized access to protected health information does not occur. Therefore, BCBSLA will institute ID and password protections prior to engaging in EDI transactions with a Trading Partner.

Authentication requires a unique Trading Partner ID and a password. BCBSLA will assign and distribute, in writing, a secure password for each Trading Partner. This password will be used for submitting both test and production transactions. However, separate Trading Partner IDs will be assigned for testing and production.

Test Trading Partner IDs will be distributed along with the password to allow testing to begin. Production Trading Partner IDs and production passwords will not be distributed until testing has been successfully completed.

The Trading Partner entity is responsible for maintaining the security of the ID and password. However, all changes are to be administered through BCBSLA EDI Customer Operations.

**BLUE CROSS AND BLUE SHIELD OF LOUISIANA
ELECTRONIC DATA INTERCHANGE CLEARINGHOUSE SERVICES**

File Formats

BCBSLA will accept all HIPAA ANSI X12N approved standard transaction formats and some non-standard transaction formats.

The table below lists accepted transaction formats and their transmission modes.

Claims	Transaction ID	Mode
Institutional Claims	837 I	Batch
Dental Claims	837 D	Batch
Professional Claims	837 P	Batch

Electronic Remittance Advice	Transaction ID	Mode
Institutional	835	Batch
Professional	835	Batch

Inquiry Transactions	Transaction ID	Mode
Eligibility and Response	270/271	Real Time/Batch
Claim Status and Response	276/277	Real Time/Batch
Certification/Referral Review/Response	278A1/A3	Batch

Group Transactions	Transaction ID	Mode
Premium Payment	820	Batch
Benefit Enrollment (Transactional File Only)	834	Batch

V. Reports Generated from Clearinghouse

The BCBSLA Clearinghouse provides a series of reports to assist in the tracking and monitoring of transactions. Clearinghouse reports are a **critical** part of the electronic submission process.

Trading Partners that dial up can create scripts to automatically retrieve these reports, whereas trading partners that use secure FTP must download them unless the FTP software is configured to pull them automatically. The communications procedures and commands associated with the reports detailed below are available in Appendix A and B.

The Trading Partner is responsible for monitoring all reports to ensure that all transactions were received and accepted for processing by BCBSLA. In addition, the Trading Partner is required to take corrective action when necessary. All questions regarding reports should be directed to EDI Customer Operations by calling 225-291-4334 or by emailing edclearinghousesupport@bcbsla.com.

We recommend that you maintain a copy of these reports for at least 60 days.

Summary of Reports Generated from Clearinghouse:

1. Communication Reports
 - a. TA1 Interchange Acknowledgement (all X12 transactions)
2. Functional Acknowledgement Report
 - a. 997 (all X12 transactions)
 - b. BCCLREDI X12 Error Report (only for X12 transactions with errors)
3. Claims Submission Validation Reports
 - a. Accepted/Not Accepted (for all Claims transactions only)
4. Activity Log The Activity Log is available from the submitter's mailbox. The log lists files/reports that were sent and received. Each listing provides the file/report name, date and time of the transmission, protocol used and the size of the file.
5. BCTPERR Report – this report is generated if the submitter ID within the transaction does not match the mailbox, if the Test/Production indicator does not match the file or if the Claim Filing Indicator is not BL.
6. (All reports will be named #####.DAT, where ##### is a sequential, unique number. The BCCLREDI will need to be renamed from a .DAT to .HTML to view the X12 errors properly in internet explorer.

Communication Reports

Communication Reports are an immediate acknowledgement of communication and receipt of transmitted files. They are the first step in the reconciliation process. They are not an indication that the transmitted files were accepted for processing. The Trading Partner is responsible for monitoring the reports and ensuring that all transactions submitted were received by the BCBSLA Clearinghouse.

If you do not receive a communication report, we did not receive the transmission and the transmission will need to be resent. You may refer to the Activity Log that is available from your mailbox to review the status of previous submissions.

TA1 Interchange Acknowledgement

The TA1 provides the status of an X12 interchange header and trailer. Positive and negative TA1 acknowledgements will be available for X12 files. Negative TA1 reports are generated for files that **cannot** be processed or submitted for HIPAA validation. Trading Partners can contract the EDI department to have positive TA1 reports discontinued. Refer to the Business Rules Claim guides distributed by Blue Cross and Blue Shield for more information on the TA1 Acknowledgement.

Functional Acknowledgment Reports

997

The 997 report is available for all X12 transactions and indicates the validity of a standard transaction. Trading Partners will be able to pull this report the next time they connect to the BCBSLA Clearinghouse. If the 997 contains a rejected status, in many cases the trading partner will receive an X12 Error Report (see below) with detailed error descriptions. However, a 997 that rejected due to errors in the "Control Structure" will only create the 997 Reject. An X12 Error Report WILL NOT be generated on an X12 transaction with Control Structure errors.

On rejected 997's the trading partner must make the corrections and retransmit the file. Refer to the Business Rules Claim guides distributed by Blue Cross and Blue Shield of Louisiana for more information on the 997 report.

BCCLREDI X12 Error Report

The BCCLREDI X12 Error Report indicates the validity of any files submitted in the 837 format. Files that do not meet standard HIPAA compliancy will be rejected. The report includes the data contained in your file as well as specific error information. Refer to the Business Rules Claim guides distributed by Blue Cross and Blue Shield of Louisiana for more information on the X12 Error report for claims. You may need to refer to the appropriate Implementation Guide for assistance with this report.

Claims Submission Validation Reports (Claims transactions only)

These reports indicate if claim transactions are accepted for processing. All claims received are validated with a comprehensive set of business logic edits. These reports will provide detailed information on the claims that have been accepted or not accepted by BCBSLA for processing. The Trading Partner is responsible for reviewing these reports and taking corrective action when necessary. Refer to the Business Rules Claim guides distributed by Blue Cross Blue Shield of Louisiana for more information on the Claims Submissions Validation Reports.

All claim transactions received Monday through Friday (except holidays) prior to 3 p.m. (CST) will be processed in our daily processing cycle. Claims Submission Validation reports are available the following day by 9 a.m.

VI. Transaction Testing

BCBSLA will require testing with trading partners before accepting production transmissions. The Trading Partner will receive all of the outputs that will be available in a production environment, including reports and response transactions. For example, if a trading partner submits a valid test claim file, they will receive a Communication Report, Functional Acknowledgement Report and Claims Submission Validation Reports. Additionally, BCBSLA will provide ERAs if the Trading Partner has elected to receive them. The ERA will be generated in a test environment and the claim will not be processed for actual payment.

Testing will ensure that the data is accurate and formatted properly for processing. Retesting is required if you are upgrading your billing software, or changing software vendors. BCBSLA reserves the right to revoke production status when Trading Partners' transactions repeatedly cause production errors.

Testing Steps

1. BCBSLA distributes a **test** submitter ID, secure password, and dial-up phone number and/or FTP address.
2. Trading Partner creates test file (minimum of 25 transactions representative of expected types that will be submitted in production. For example, if submitting claims, the test file should contain at least 25 claims that represent a sample of the various claim types that would be submitted in the normal course of business. It is important that valid patient data is used within the test file; otherwise, the test may fail).
3. Trading Partner transmits test file to BCBSLA clearinghouse. Test files will be processed at 8:00 am and 10:00 am.
4. Trading Partner reviews the reports BCBSLA provides:
 - Communication Report verifies BCBSLA received the file.
 - Functional Acknowledgement Report (997) indicates if file format was valid.
 - For claims transactions, the Claims Submission Validation Reports will indicate if the file passed internal edits. Additionally, trading partners that have elected to receive ERAs should review this file to see the processing/adjudication results.
5. Trading Partner must correct all errors and resubmit the test files until testing reaches an acceptable level.
6. Trading Partner must contact an EDI representative when testing is satisfactory and a **production** submitter ID number and password will be issued.

Once Trading Partners are approved for production for a particular transaction, it is strongly recommended that all files be electronically submitted for that transaction.

NOTE: Test Transactions are NOT Processed for Payment.

VII. Appendix A Asynchronous Communications

For asynchronous communication, the following information will provide the method of access to the modem network.

The following contains instructions and illustrations to access the BCBSLA EDI communications server using HyperTerminal. The illustrations may differ slightly depending on which communications protocol is used (x, y, z modem, Kermit. without Crash Recovery) The dial-up number will be included with the letter issuing your test ID number.

Modem Information:

- Up to 56k bps.
- 2 – Two Start Bits
- 1 – Stop Bits
- 8 – Eight Data Bits
- N – No parity
- VT100 Emulation
- Compression - **Disabled**

Async File Send and Receive Commands

Sending Files: (file name cannot contain spaces)	
Type/Format of File	Command
837I, 837P, 837D	\$\$ADD BID='X12Claims.in'
270, 276, 278, 834	\$\$ADD BID='X12File.in'
Receiving Files/Reports:	
X12 Claims (837I, P, D)	Command
Blue Cross TA1 Report	\$\$REQ BID='BCTA1.out'
Blue Cross 997 Report	\$\$REQ BID='BC997.out'
BCCLREDI X12 Error Report	\$\$REQ BID='BCCLREDI.html'
Blue Cross Accepted/Not Accepted Claims Reports	\$\$REQ BID='BCAccNotAccRep.out'
Benefit Management Accepted/Not Accepted Claims Reports	\$\$REQ BID='BCBMSAccNotAccRep.out'
Electronic Remittance Advice (ERA)	
X12 835 BCBSLA remit	\$\$REQ BID='BC835.out'
X12 835 Nasco remit	\$\$REQ BID='BCNasco835.out'
Other X12 Transactions	
Blue Cross TA1 Report	\$\$REQ BID='BCTA1.out'
Blue Cross 997 Report	\$\$REQ BID='BC997.out'
BCCLREDI X12 Error Report	\$\$REQ BID='BCCLREDI.html'
Transaction Files for 835, 271, 277, 278	\$\$REQ BID='BCXXX.out' (XXX = 835, 277,271 etc.)
All Transactions	
Menu of Activity (Directory)	
Activity Log	\$\$REQ BID='<<Activity Log>>'
BCTPERR	\$\$REQ BID='BCTPERR.out'

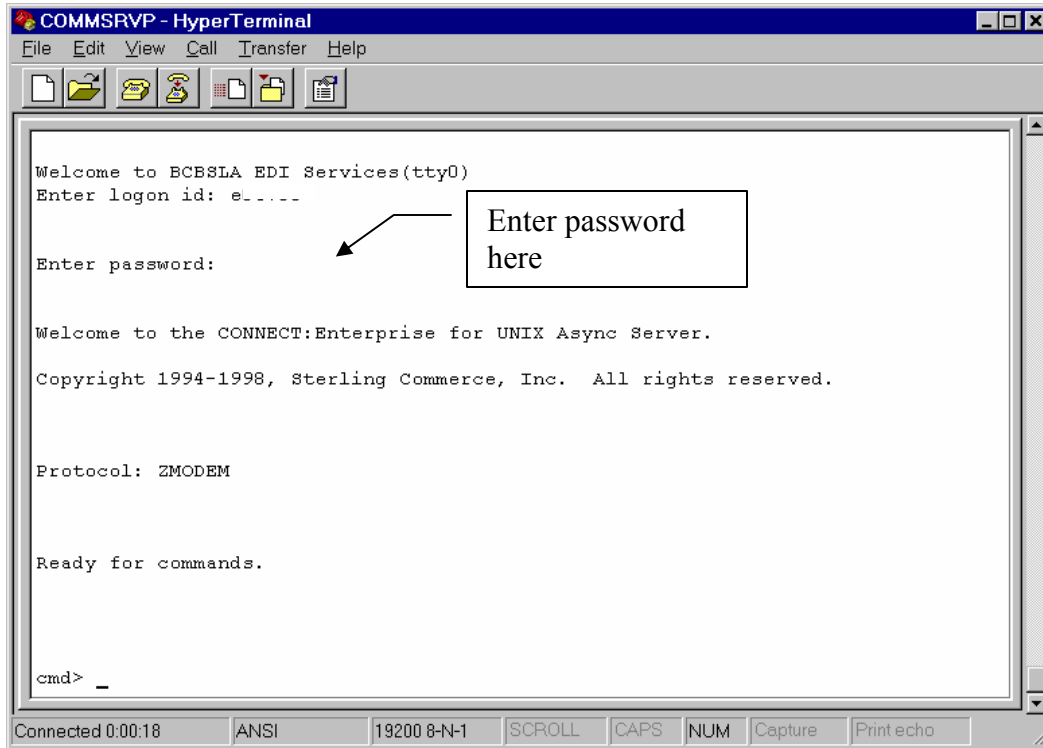
Wild Cards (*.*)

Wild cards can be utilized in the commands above.

** BCHSEP=OPT4 – indicates that all files should be kept separate.

Dial-up login Screen

Once a connection has been established, you will see the initial Async dial-up login screen displayed below. You must enter your assigned logon id and password before entering a command.

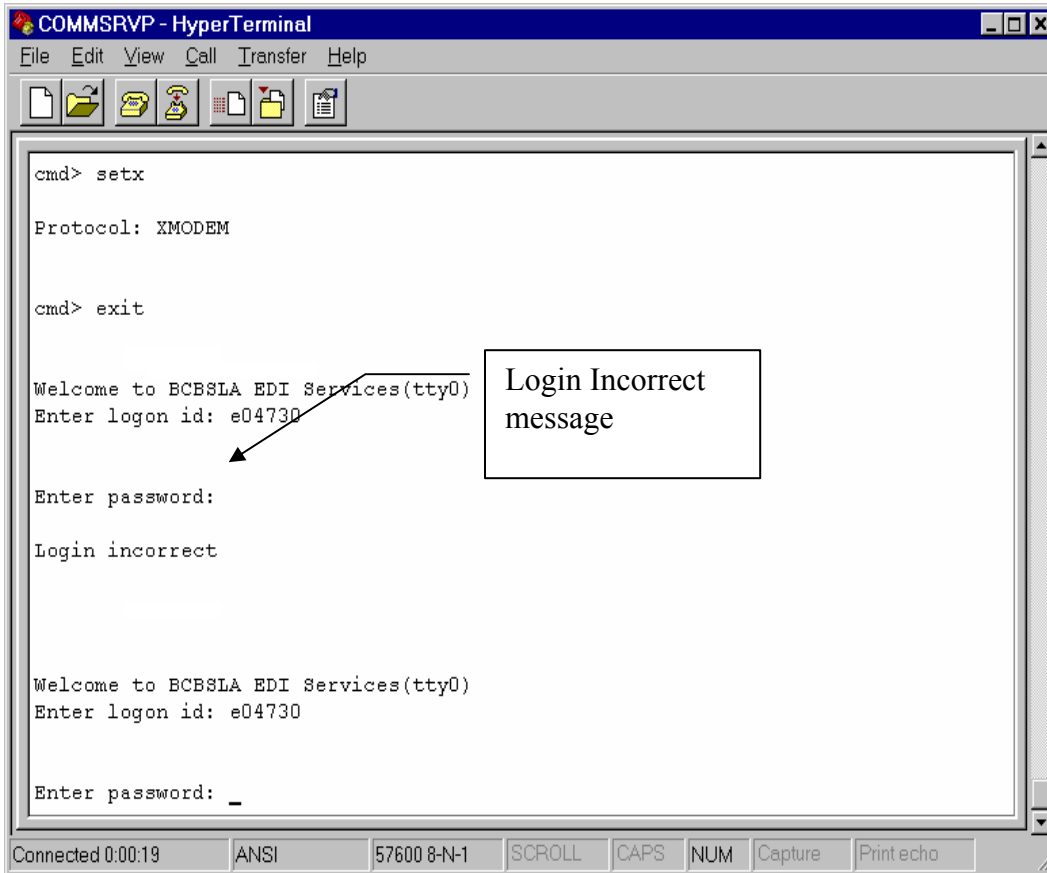


Logon ID and Password

Please use the login ID and password that was assigned to you by BCBSLA EDI department. It is your sole responsibility to keep a record of your password. BCBSLA will not have access to your password. If you have lost or forgotten your password, please contact EDI by calling 225-291-4334 or emailing edclearinghousesupport@bcbsla.com for assistance. Passwords are case sensitive.

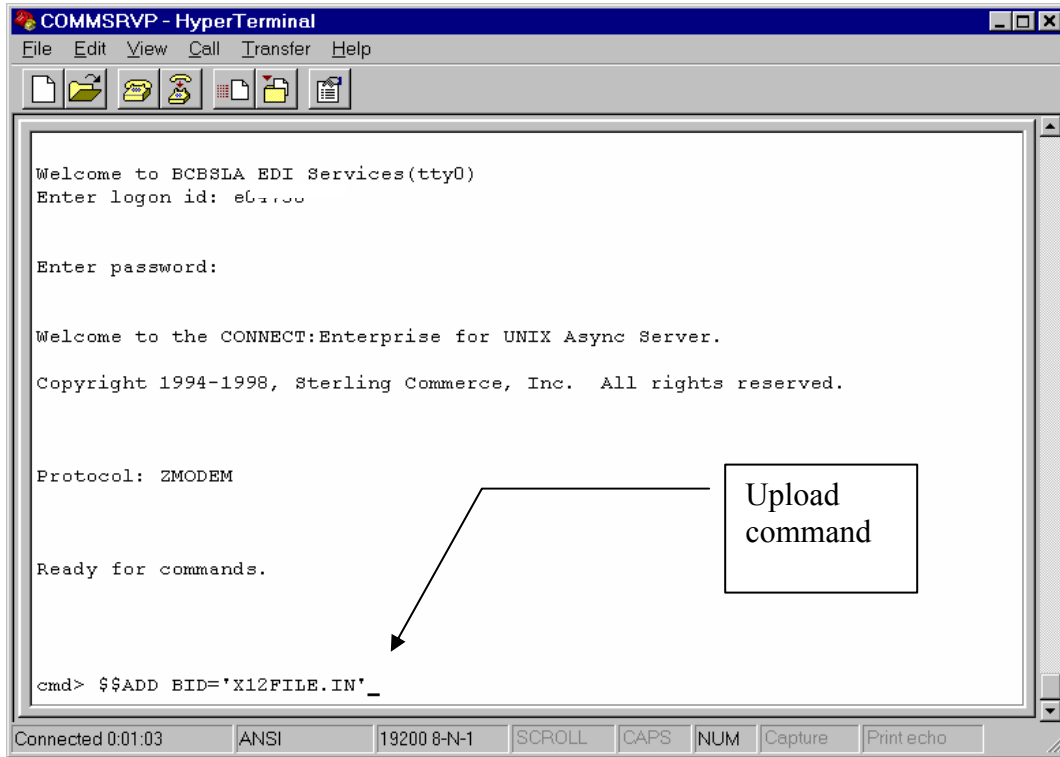
Incorrect Login/password message

You will receive a "Login incorrect" message if you enter an incorrect password or user id. Re-enter the login information and enter. Contact EDI by calling 225-291-4334 or emailing edclearinghousesupport@bcbsla.com if you experience password problems.



Upload/Add HIPAA Compliant X12 Transactions

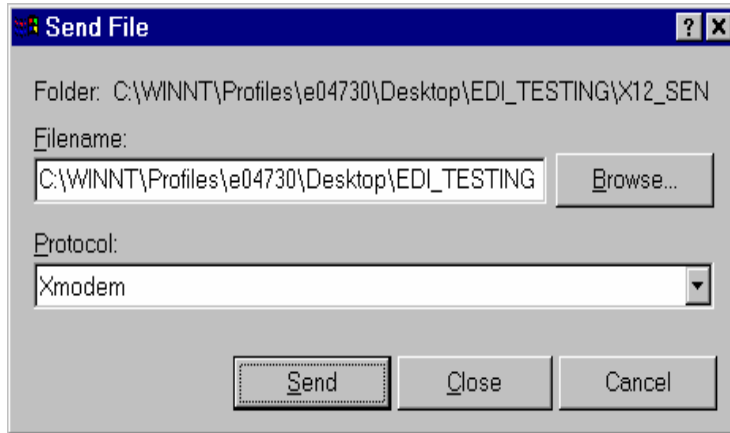
Once initial logon is complete, you are ready to transmit files. Enter the upload command at the cmd>prompt as shown below and hit enter. See the list of send commands below.



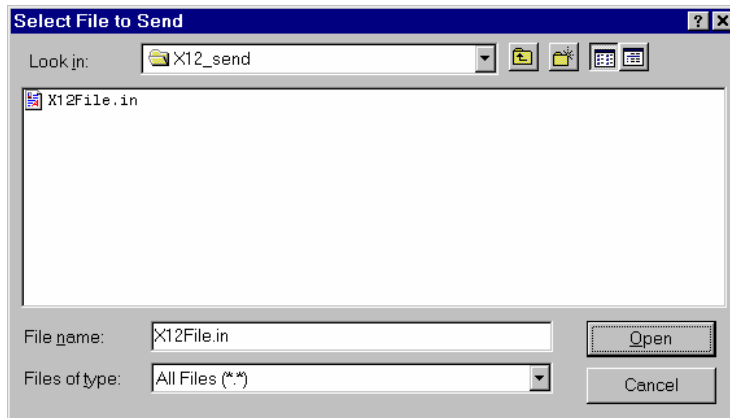
Async File Send commands <i>(file name cannot contain spaces)</i>	
Type/Format of File	Command
837I, 837P, 837D	\$\$ADD BID='X12Claims.in'
270, 276, 278, 834	\$\$ADD BID='X12File.in'

BLUE CROSS AND BLUE SHIELD OF LOUISIANA
ELECTRONIC DATA INTERCHANGE CLEARINGHOUSE SERVICES

When the “Send File” window appears, enter the path of the file in the Filename box or select the Browse to search for the file on your system and click Send. You must send only one file at a time. Repeat the transfer steps for each additional file.



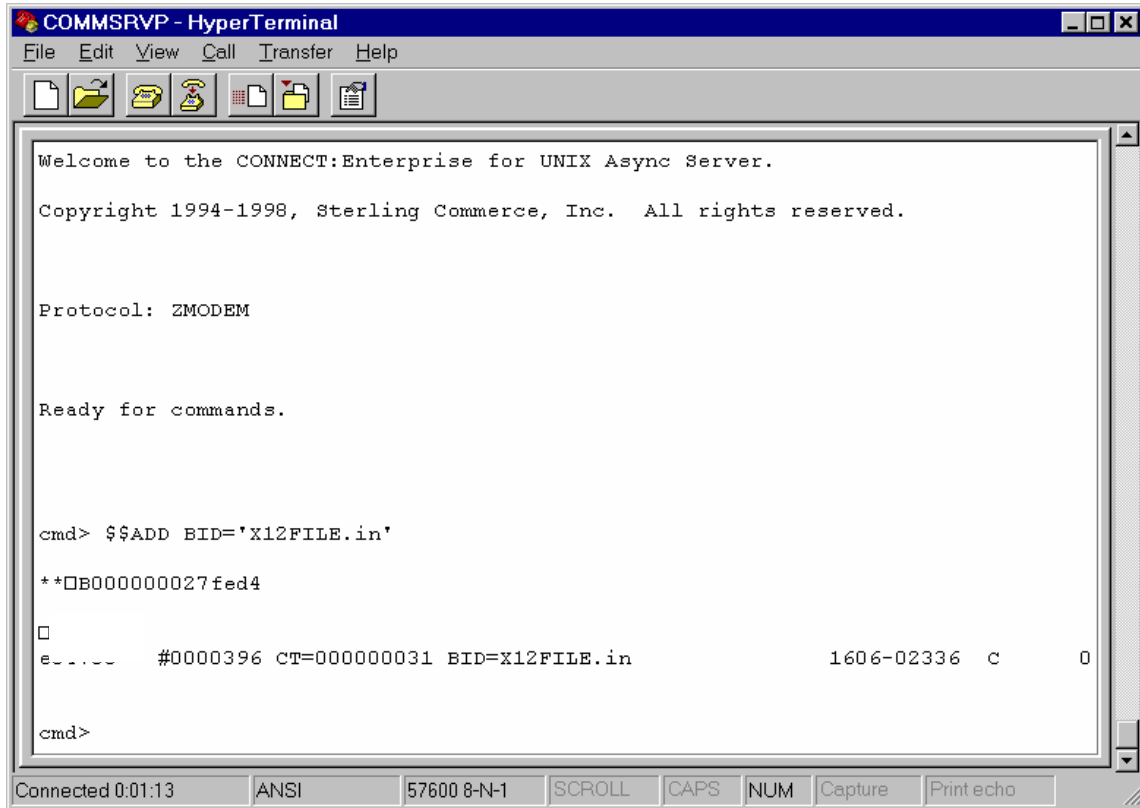
The “Select File to Send” window will appear. Select the desired file and click Open.



If you have chosen to browse for your file, you will then select the file to transmit and then click Open.

BLUE CROSS AND BLUE SHIELD OF LOUISIANA
ELECTRONIC DATA INTERCHANGE CLEARINGHOUSE SERVICES

Once the send is complete, the screen below will display:



```
COMMSRVP - HyperTerminal
File Edit View Call Transfer Help

Welcome to the CONNECT:Enterprise for UNIX Async Server.
Copyright 1994-1998, Sterling Commerce, Inc. All rights reserved.

Protocol: ZMODEM

Ready for commands.

cmd> $$ADD BID='X12FILE.in'
**B0000000027fed4
e..... #0000396 CT=0000000031 BID=X12FILE.in 1606-02336 C 0

cmd>
```

Connected 0:01:13 ANSI 57600 8-N-1 SCROLL CAPS NUM Capture Print echo

Requesting HIPAA Compliant X12 Response Files (Including 271, 277, 278, 835 transactions)

Enter the receive command at the cmd> prompt as shown below and hit enter. See the list of receive commands below.

```

COMMSRVP - HyperTerminal
File Edit View Call Transfer Help

Copyright 1994-1998, Sterling Commerce, Inc. All rights reserved.

Protocol: ZMODEM

Ready for commands.

cmd> $$REQ BID='ERA.*' BCHSEP=OPT4
**00000000000000
□
cmd> $$REQ BID='X12File.out'
**00000000000000
□
cmd> exit_

Connected 0:02:06  ANSI  57600 8-N-1  SCROLL  CAPS  NUM  Capture  Print echo
    
```

Async File Receive commands	
X12 Claims (837I, P, D)	Command
Blue Cross TA1 Report	\$\$REQ BID='BCTA1.out'
Blue Cross 997 Report	\$\$REQ BID='BC997.out'
BCCLREDI X12 Error Report	\$\$REQ BID='BCCLREDI.html'
Accepted/Not Accepted Claims Reports	\$\$REQ BID='BCAccNotAccRep.out'

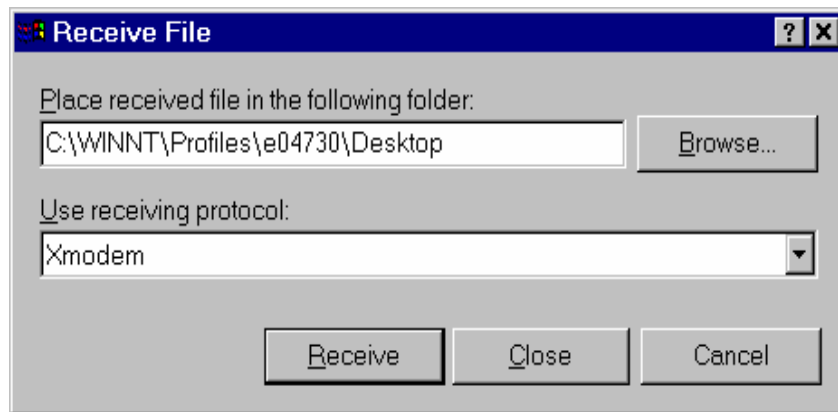
BLUE CROSS AND BLUE SHIELD OF LOUISIANA
ELECTRONIC DATA INTERCHANGE CLEARINGHOUSE SERVICES

Async File Receive commands *(continued)*

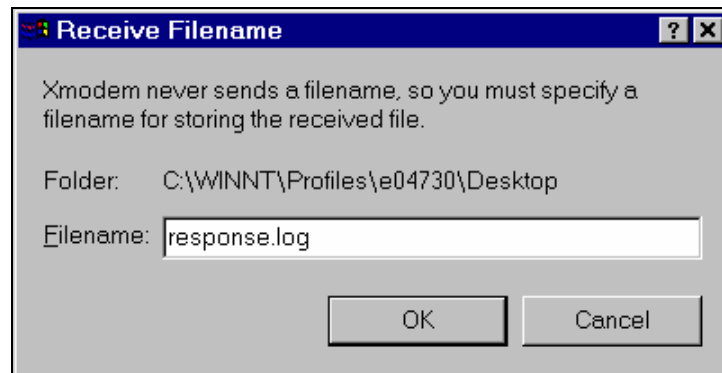
Electronic Remittance Advice (ERA)	Command
X12 835 BCBSLA Remits	\$\$REQ BID='BC835.out'
X12 835 Nasco Remits	\$\$REQ BID='BCNasco835.out'
Other X12 Transactions	
Blue Cross TA1 Report	\$\$REQ BID='BCTA1.out'
Blue Cross 997 Report	\$\$REQ BID='BC997.out'
BCCLREDI X12 Error Report	\$\$REQ BID='BCCLREDI.html'
Transaction Files for 835, 271, 277, 278	\$\$REQ BID='BCXXX.out' (XXX = 835, 277,271 etc.)
All Transactions	
Menu of Activity (Directory)	\$\$DIR
Activity Log	\$\$REQ BID='<<Activity Log>>'
BCTPERR Report	\$\$REQ BID='BCTPERR.out'

** BCHSEP=OPT4 – indicates that all files should be kept separate.

When the “Receive File” window appears, enter the path location for the received file or Browse. Click Receive.



Enter a filename in the Filename box and click OK.



Downloading/Retrieving 835 ERA Files From the Mailbox.

(Files will be named #####.DAT, where ##### is a sequential, unique number)

Enter logon id: XXXXXXXXXXXX

Enter password: XXXXXXXX

Welcome to the Connect:Enterprise UNIX Async Server.
Copyright 1994-2005, Sterling Commerce, Inc. All rights reserved.

Protocol: ZMODEM

Ready for commands.

cmd> \$\$REQ BID='BC835.out'

Logging Off the Communication Server

To log off, type exit at the command prompt.

```
COMMSRVP - HyperTerminal
File Edit View Call Transfer Help

Copyright 1994-1998, Sterling Commerce, Inc. All rights reserved.

Protocol: ZMODEM

Ready for commands.

cmd> $$REQ BID='ERA.*' BCHSEP=OPT4

**00000000000000

□
cmd> $$REQ BID='X12File.out'

**00000000000000

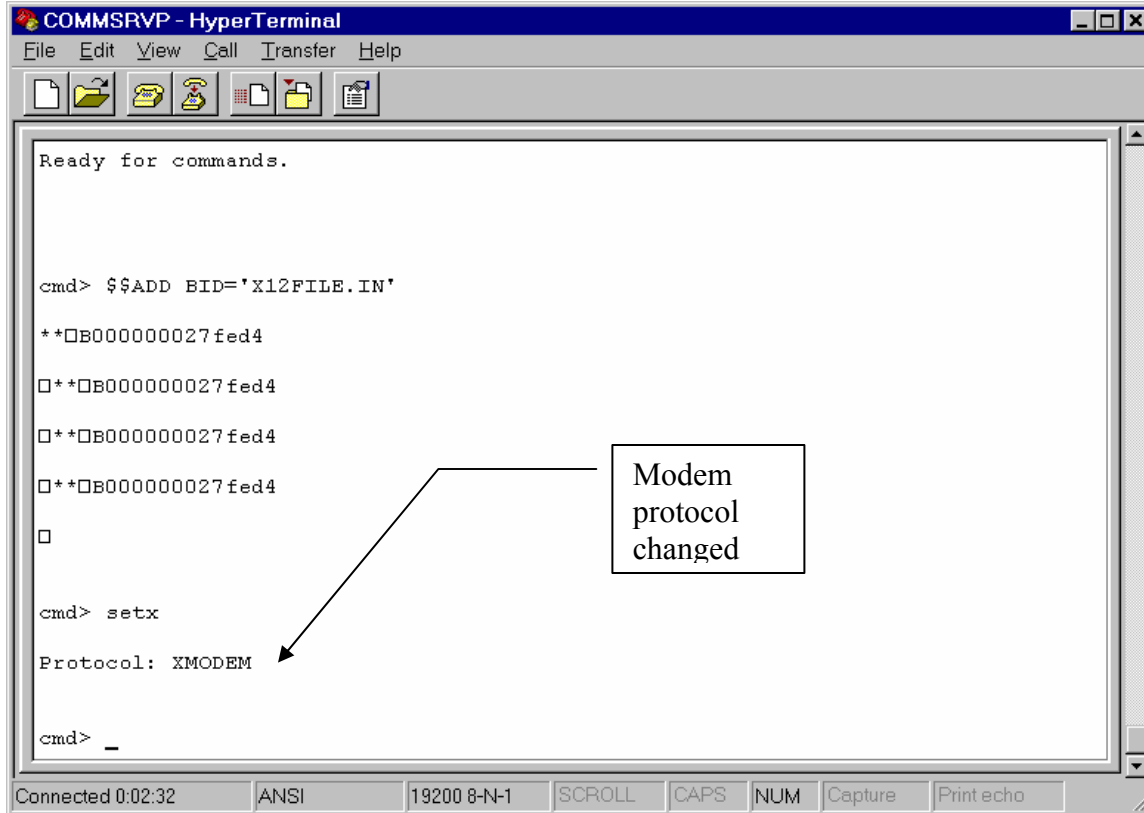
□
cmd> exit_

Exit
command

Connected 0:02:06 ANSI 57600 8-N-1 SCROLL CAPS NUM Capture Print echo
```

How to specify a modem protocol.

The modem protocol default is z modem. To specify a different modem protocol enter the command setx (x modem), sety (y modem), or setk (Kermit) in the command prompt and hit enter.



VIII. Appendix B: FTP Communications

Connect Enterprise Secure Client Configuration

Blue Cross of Louisiana uses the Connect Enterprise product from Sterling Commerce as the focal point for secure file transfers with business partners. Sterling Commerce has stated that Connect Enterprise will communicate with any secure client that supports SSL. Although the configuration of each client product will be unique, there are several items that must be specified to communicate with Blue Cross of Louisiana:

1. The host site ceftp.bcbsla.com must be specified.
2. Port 10021, not 21, must be defined for file transfers.
3. The use of SSL must be indicated.
4. Passive mode ftp must be used.
5. A user id and password, which we will send you, must be supplied.
6. Ports 10021-10099 must be opened on your firewall. Connect Enterprise rotates through this range of ports when sessions are established.

Depending on the client product, you may need to supply the following information:

1. The server type is FTP.
2. The server operating system is Unix.

Connect Enterprise uses the mailbox concept for exchanging files. One party drops off a file in the mailbox and the other picks it up. Your mailbox name is your user id, so whenever you connect to our site, you will automatically be positioned in your mailbox, and any undeleted files will be displayed.

FTP File Send and Receive Commands

FTP File Send/Receive commands	
Sending Files	
Type/Format of File	Command
837I, 837P, 837D	put xxxxxxxxxxxx_directory 'X12Claims.in'
270, 276, 278, 834	put xxxxxxxxxxxx_directory 'X12File.in'
Receiving Files/Reports:	
X12 Claims (837I, P, D)	
	Command
Blue Cross TA1 Report	get xxxxxxxxxxxx_directory 'BCTA1.out'
Blue Cross 997 Report	get xxxxxxxxxxxx_directory 'BC997.out'
BCCLREDI X12 Error Report	get xxxxxxxxxxxx_directory 'BCCLREDI.html'
Accepted/Not Accepted Claims Reports	get xxxxxxxxxxxx_directory 'BCAccNotAccRep.out'
Electronic Remittance Advice (ERA)	
	Command
X12 835	get xxxxxxxxxxxx_directory 'BC835.out'
Other X12 Transactions	
Blue Cross TA1 Report	get xxxxxxxxxxxx_directory 'BCTA1.out'
Blue Cross 997 Report	get xxxxxxxxxxxx_directory 'BC997.out'
BCCLREDI X12 Error Report	get xxxxxxxxxxxx_directory 'BCCLREDI.html'
Transaction Files for 835, 271, 277, 278	get xxxxxxxxxxxx_directory 'BCXXX.out' (XXX = 835, 277,271 etc.)
All Transactions	
Menu of Activity	
	DIR
Activity Log	get xxxxxxxxxxxx_directory ' <<Activity Log >>
BCTPERR Report	get xxxxxxxxxxxx_directory 'BCTPERR.out'

Wild Cards (*.*)

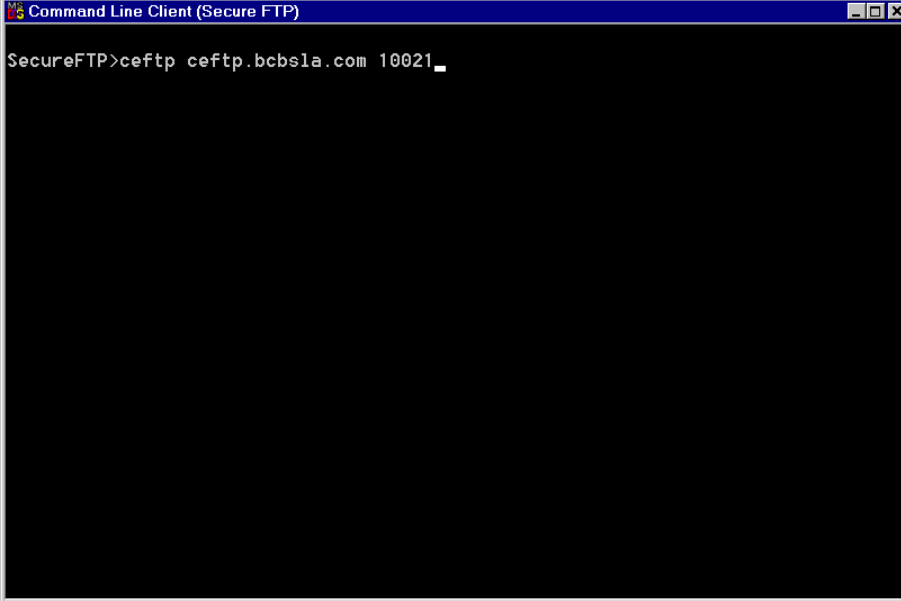
Wild cards can be utilized in the commands above.

** BCHSEP=OPT4 – indicates that all files should be kept separate.

Send/Receive commands contain xxxxxxxxxxxx, where xxxxxxxxxxxx is the destination of the file.

FTP Login and Directory Request

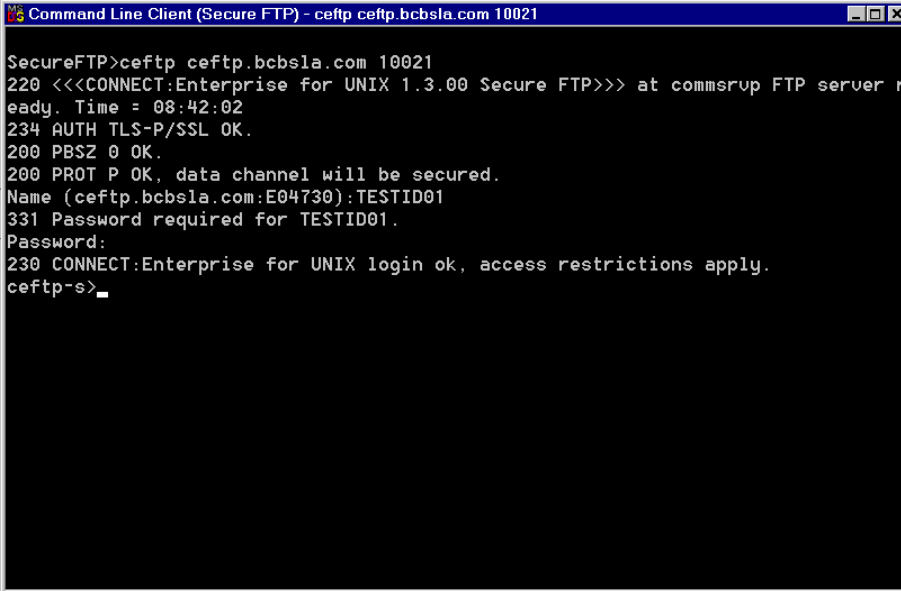
FTP submitters will connect to the system via the address/port ceftp.bcbsla.com Users will be prompted to enter a user id and password.



SecureFTP>ceftp ceftp.bcbsla.com 10021_

Connection Command

The screenshot shows a window titled "Command Line Client (Secure FTP)". The text "SecureFTP>ceftp ceftp.bcbsla.com 10021_" is entered on the first line. A box labeled "Connection Command" has an arrow pointing to the end of this line.



SecureFTP>ceftp ceftp.bcbsla.com 10021
220 <<<CONNECT:Enterprise for UNIX 1.3.00 Secure FTP>>> at commsrup FTP server r
eady. Time = 08:42:02
234 AUTH TLS-P/SSL OK.
200 PBSZ 0 OK.
200 PROT P OK, data channel will be secured.
Name (ceftp.bcbsla.com:E04730):TESTID01
331 Password required for TESTID01.
Password:
230 CONNECT:Enterprise for UNIX login ok, access restrictions apply.
ceftp-s>_

User ID and password prompt

The screenshot shows the same window after the connection. The text "SecureFTP>ceftp ceftp.bcbsla.com 10021" is on the first line. The second line is "220 <<<CONNECT:Enterprise for UNIX 1.3.00 Secure FTP>>> at commsrup FTP server ready. Time = 08:42:02". The third line is "234 AUTH TLS-P/SSL OK.". The fourth line is "200 PBSZ 0 OK.". The fifth line is "200 PROT P OK, data channel will be secured.". The sixth line is "Name (ceftp.bcbsla.com:E04730):TESTID01". The seventh line is "331 Password required for TESTID01.". The eighth line is "Password:". The ninth line is "230 CONNECT:Enterprise for UNIX login ok, access restrictions apply.". The tenth line is "ceftp-s>_". A box labeled "User ID and password prompt" has two arrows pointing to the "Name" and "Password:" lines.

After successfully logging on enter 'passive' in the command line

Required
command

```
Command Line Client (Secure FTP) - ceftp ceftp.bcbsla.com 10021
SecureFTP>ceftp ceftp.bcbsla.com 10021
220 <<<CONNECT:Enterprise for UNIX 1.3.00 Secure FTP>>> at commsrup FTP server r
eady. Time = 09:17:19
234 AUTH TLS-P/SSL OK.
200 PBSZ 0 OK.
200 PROT P OK, data channel will be secured.
Name (ceftp.bcbsla.com:E04730):TESTID01
331 Password required for TESTID01.
Password:
230 CONNECT:Enterprise for UNIX login ok, access restrictions apply.
ceftp-s>passive
Passive mode on.
ceftp-s>dir
227 Entering Passive Mode (64,56,11,60,39,38)
150 Opening ASCII mode data connection for .
226 Transfer complete.
-C-----FTS B TESTID01      386      1024 Apr 02 09:55 rand.dat
-C-----FTS A TESTID01      385      14161 Apr 04 09:00 X12File.in
IAR-----TCP A ce_user      382         25 Apr 04 09:08 X12File.out
Total number of batches listed: 3
ceftp-s>
```

Enter 'dir' in the command line to access a directory listing

Accessing the
directory
listing

```
Command Line Client (Secure FTP) - ceftp ceftp.bcbsla.com 10021
ceftp-s>dir
227 Entering Passive Mode (64,56,11,60,39,38)
150 Opening ASCII mode data connection for .
226 Transfer complete.
-C-----FTS B TESTID01      386      1024 Apr 02 09:55 rand.dat
-C-----FTS A TESTID01      385      14161 Apr 04 09:00 X12File.in
IAR-----TCP A ce_user      382         25 Apr 04 09:08 X12File.out
Total number of batches listed: 3
ceftp-s>put X12File.in
227 Entering Passive Mode (64,56,11,60,39,39)
150 Opening ASCII mode data connection for X12File.in.
Transferred 14161 bytes in 0.0 seconds (157.0 Kbytes/sec)
226 226- Transfer complete pending.
226- Transfer complete pending.
Transfer complete (Batch Number = 384).
ceftp-s>dir
227 Entering Passive Mode (64,56,11,60,39,40)
150 Opening ASCII mode data connection for .
226 Transfer complete.
-C-----FTS B TESTID01      386      1024 Apr 02 09:55 rand.dat
-C-----FTS A TESTID01      385      14161 Apr 04 09:00 X12File.in
IAR-----TCP A ce_user      382         25 Apr 04 09:08 X12File.out
-C-----FTS A TESTID01      384      14161 Apr 04 09:19 X12File.in
Total number of batches listed: 4
ceftp-s>
```

File Size

Date file was
loaded into
mailbox

Batch ID

PUT Command: to send files

In order to upload or send a file, the user will enter a 'put' command followed by the filename. See the list of put commands below:

'put' or
send
command

```

Command Line Client (Secure FTP) - ceftp ceftp.bcbsla.com 10021
-CR-----FTS B TESTID01      386      1024 Apr 02 09:55 rand.dat
-CRT-----FTS A TESTID01      385      14161 Apr 04 09:00 X12File.in
-AR-----TCP A ce_user        382         25 Apr 04 09:08 X12File.out
-CRT-----FTS A TESTID01      384      14161 Apr 04 09:19 X12File.in
-C-----FTS A TESTID01        433      14161 Apr 04 09:29 X12File.in
Total number of batches listed: 5
ceftp-s>put X12File.in
227 Entering Passive Mode (64,56,11,60,39,39)
150 Opening ASCII mode data connection for X12File.in.
Transferred 28324 bytes in 0.0 seconds (200.0 Kbytes/sec)
226 226- Transfer complete pending.
226- Transfer complete pending.
Transfer complete (Batch Number = 435).
ceftp-s>dir
227 Entering Passive Mode (64,56,11,60,39,40)
150 Opening ASCII mode data connection for .
226 Transfer complete.
-CR-----FTS B TESTID01      386      1024 Apr 02 09:55 rand.dat
-CRT-----FTS A TESTID01      385      14161 Apr 04 09:00 X12File.in
-AR-----TCP A ce_user        382         25 Apr 04 09:08 X12File.out
-CRT-----FTS A TESTID01      384      14161 Apr 04 09:19 X12File.in
-C-----FTS A TESTID01        433      14161 Apr 04 09:29 X12File.in
-C-----FTS A TESTID01        435      28323 Apr 04 09:35 X12File.in
Total number of batches listed: 6
ceftp-s>
    
```

FTP File Send commands	
Sending Files:	
Type/Format of File	Command
837I, 837P, 837D	put xxxxxxxxxxxx_directory 'X12Claims.in'
270, 276, 278, 834	put xxxxxxxxxxxx_directory 'X12File.in'

Send commands contain xxxxxxxxxxxx, where xxxxxxxxxxxx is the destination of the file.

GET Command: to retrieve files

In order to download or receive a file, the user will enter a 'get' command followed by the filename. See list of get commands below:

```

Command Line Client (Secure FTP) - ceftp ceftp.bcbsla.com 10021
227 Entering Passive Mode (64,56,11,60,39,39)
150 Opening ASCII mode data connection for X12File.in.
Transferred 28324 bytes in 0.0 seconds (200.0 Kbytes/sec)
226 226- Transfer complete pending.
226- Transfer complete pending.
Transfer complete (Batch Number = 435).
ceftp-s>dir
227 Entering Passive Mode (64,56,11,60,39,40)
150 Opening ASCII mode data connection for .
226 Transfer complete.
-CR-----FTS B TESTID01      386      1024 Apr 02 09:55 rand.dat
-CRT-----FTS A TESTID01      385      14161 Apr 04 09:00 X12File.in
-AR-----TCP A ce_user        382         25 Apr 04 09:08 X12File.out
-CRT-----FTS A TESTID01      384      14161 Apr 04 09:19 X12File.in
-C-----FTS A TESTID01        433      14161 Apr 04 09:29 X12File.in
-C-----FTS A TESTID01        435      28323 Apr 04 09:35 X12File.in
Total number of batches listed: 6
ceftp-s>get X12File.out
227 Entering Passive Mode (64,56,11,60,39,41)
150 Opening ASCII mode data connection for X12File.out.
Transferred 31 bytes in 0.0 seconds (0.0 Kbytes/sec)
226 Transfer complete.
local:D:\Program Files\Sterling Commerce\Enterprise Command Line Client (Secure
FTP)\X12File.out remote:X12File.out
ceftp-s>

```

FTP File Receive commands	
X12 Claims (837I, P, D)	Command
Blue Cross TA1 Report	get xxxxxxxxxxxx_directory 'BCTA1.out'
Blue Cross 997 Report	get xxxxxxxxxxxx_directory 'BC997.out'
BCCLREDI X12 Error Report	get xxxxxxxxxxxx_directory 'BCCLREDI.html'
Accepted/Not Accepted Claims Reports	get xxxxxxxxxxxx_directory 'BCAccNotAccRep.out'
Electronic Remittance Advice (ERA)	Command
X12 835	get xxxxxxxxxxxx_directory 'BC835.out'

** BCHSEP=OPT4 – indicates that all files should be kept separate.

BLUE CROSS AND BLUE SHIELD OF LOUISIANA
ELECTRONIC DATA INTERCHANGE CLEARINGHOUSE SERVICES

FTP File Receive commands *(continued)*

	Other X12 Transactions	
	Blue Cross TA1 Report	get xxxxxxxxxxxx_directory 'BCTA1.out'
	Blue Cross 997 Report	get xxxxxxxxxxxx_directory 'BC997.out'
	BCCLREDI X12 Error Report	get xxxxxxxxxxxx_directory 'BCCLREDI.html'
	Transaction Files for 835, 271, 277, 278	get xxxxxxxxxxxx_directory 'BCXXX.out' (XXX = 835, 277,271 etc.)
	All Transactions	
	Menu of Activity	DIR
	Activity Log	get xxxxxxxxxxxx_directory' '<<Activity Log>

Receive commands contain xxxxxxxxxxxx, where xxxxxxxxxxxx is the destination of the file.

Quit Command: To log off

To log out enter a 'quit' command in the command line.

```
Command Line Client (Secure FTP)
227 Entering Passive Mode (64,56,11,60,39,38)
150 Opening ASCII mode data connection for .
226 Transfer complete.
-CR-----FTS B TESTID01      386      1024 Apr 02 09:55 rand.dat
-CRT-----FTS A TESTID01      385     14161 Apr 04 09:00 X12File.in
-ART-----TCP A ce_user       382         25 Apr 04 09:08 X12File.out
-CRT-----FTS A TESTID01      384     14161 Apr 04 09:19 X12File.in
-C-----FTS A TESTID01       433     14161 Apr 04 09:29 X12File.in
-C-----FTS A TESTID01       435     28323 Apr 04 09:35 X12File.in
Total number of batches listed: 6
ceftp-s>dir
227 Entering Passive Mode (64,56,11,60,39,39)
150 Opening ASCII mode data connection for .
226 Transfer complete.
-CR-----FTS B TESTID01      386      1024 Apr 02 09:55 rand.dat
-CRT-----FTS A TESTID01      385     14161 Apr 04 09:00 X12File.in
-ART-----TCP A ce_user       382         25 Apr 04 09:08 X12File.out
-CRT-----FTS A TESTID01      384     14161 Apr 04 09:19 X12File.in
-C-----FTS A TESTID01       433     14161 Apr 04 09:29 X12File.in
-C-----FTS A TESTID01       435     28323 Apr 04 09:35 X12File.in
Total number of batches listed: 6
ceftp-s>quit
221 Goodbye.
CONNECT:Enterprise Command Line Client (Secure FTP) 1.1.00 has ended.
SecureFTP>
```